



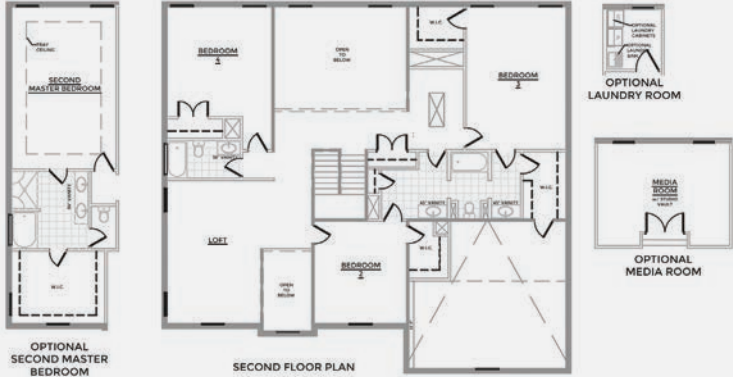
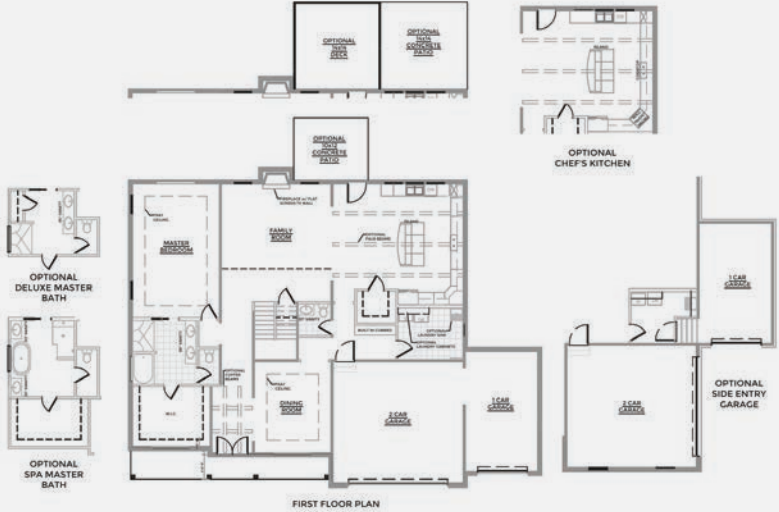
THE PIEDMONT TRIAD'S
PREMIER BUILDER



Lancaster

Walk-in to this home's grand 2-story foyer and you'll be greeted by the formal dining room. Vaulted ceilings in the great room with a fireplace. Oversized island in the open concept kitchen, formal dining room. Master suite features tray ceilings and large master bathroom. Options available such as media room, 2nd master suite and many more.

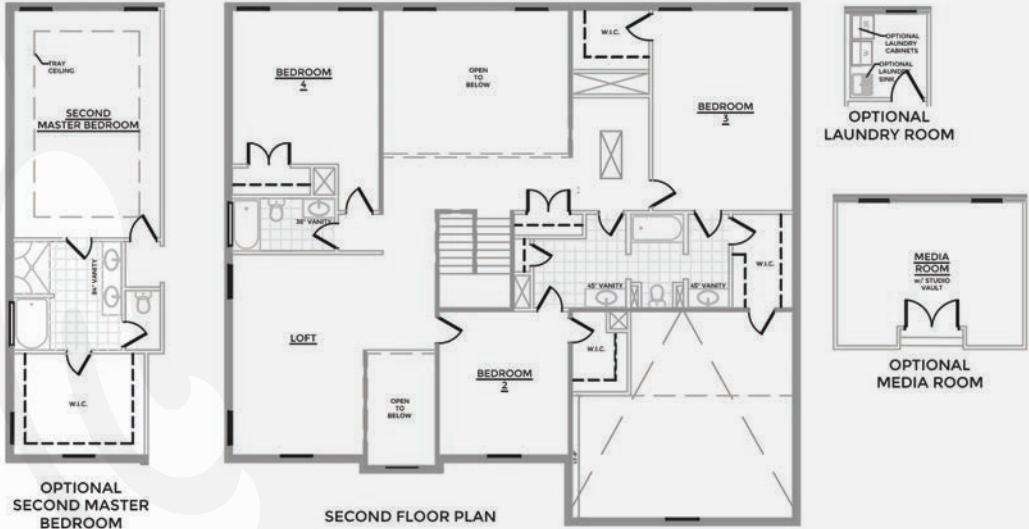
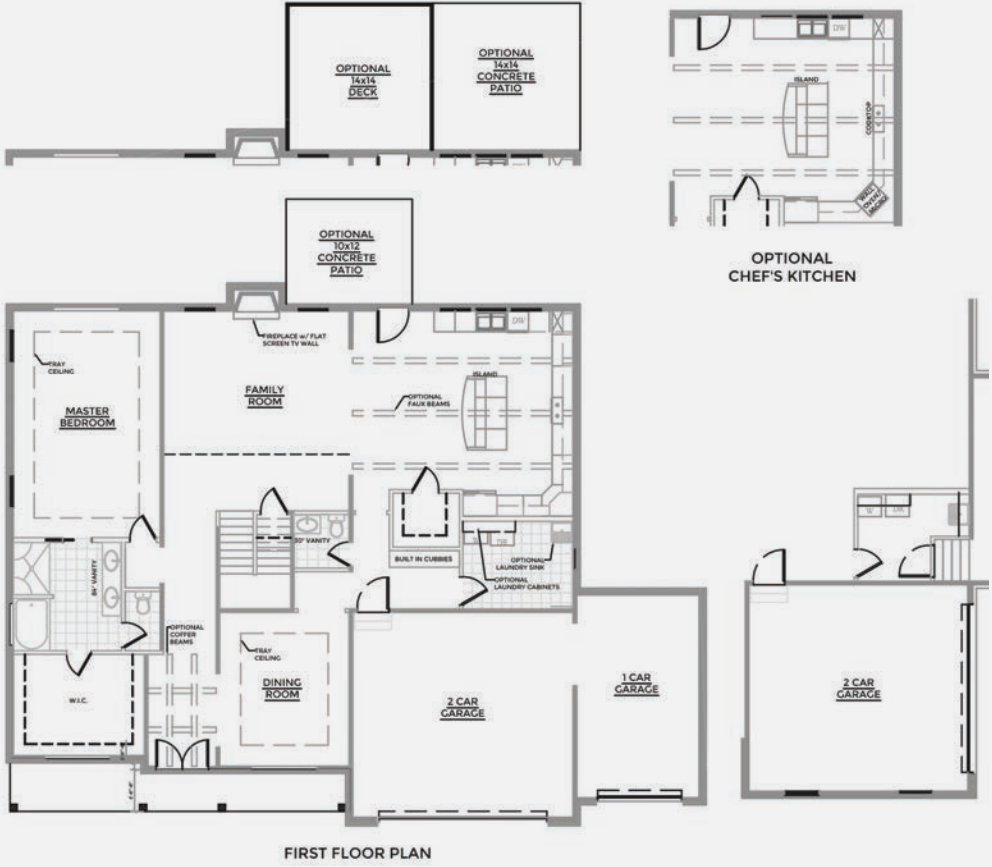
- Bedrooms: 4
- Full Baths: 3/0
- Square Footage: 4,236
- Stories: 2



Housing Opportunity. Prices floor plans & standard features are subject to change without notice. The elevations, floor plans & square footages shown are for illustrative purposes only. Structural or other modifications which are in accordance with applicable building codes may be made as deemed necessary or appropriate given the elevation to other characteristics of the lot on which the home is constructed. The dimensions and total square footage shown are approximations only. Actual dimensions and total square footage of the home constructed may vary.



THE PIEDMONT TRIAD'S
PREMIER BUILDER



Lancaster

081418