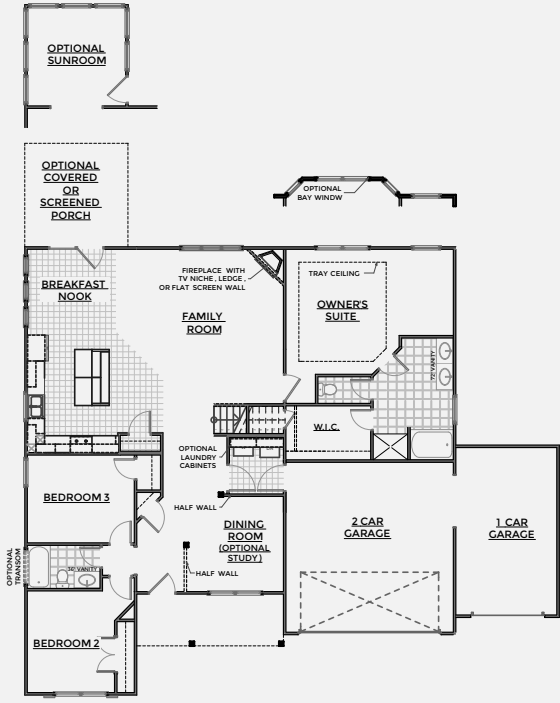




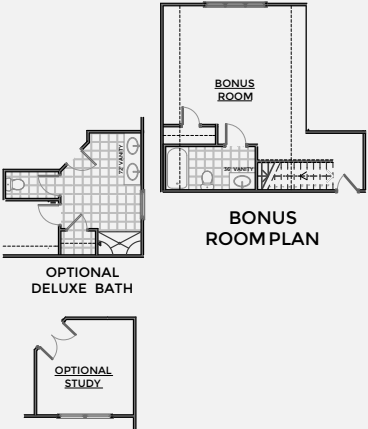
Newport Lux

This luxury style home features an open concept living space including an immaculate kitchen that is open to the breakfast nook and family room. 9' ceilings throughout the 1st floor. Owners suite features a tray ceiling, luxury master bath layout, oversized walk-in closet with the option to add a bay window. 2nd floor bonus room complete with a full bath.

- Bedrooms: 3
- Baths: 3
- Square footage: 2,260
- Stories: 2



FIRST FLOOR PLAN

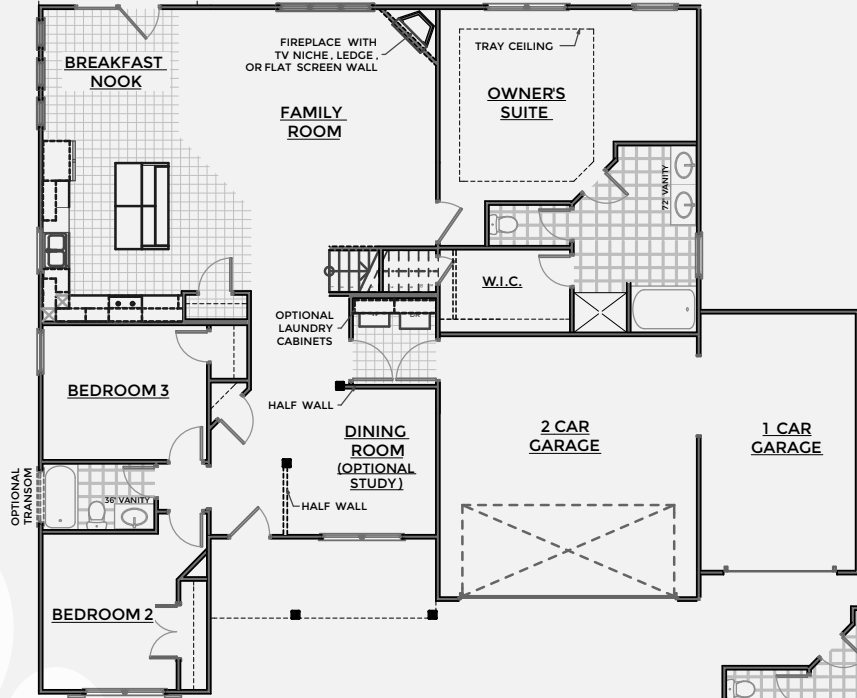
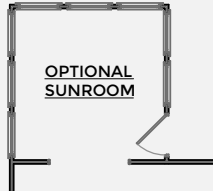


BONUS ROOM PLAN

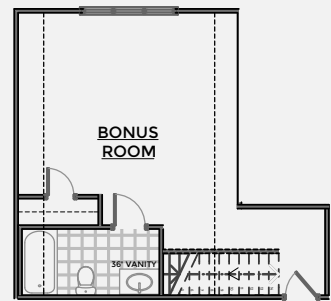
OPTIONAL DELUXE BATH

OPTIONAL STUDY

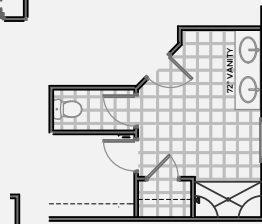
Housing Opportunity. Prices floor plans & standard features are subject to change without notice. The elevations, floor plans & square footages shown are for illustrative purposes only. Structural or other modifications which are in accordance with applicable building codes may be made as deemed necessary or appropriate given the elevation to other characteristics of the lot on which the home is constructed. The dimensions and total square footage shown are approximations only. Actual dimensions and total square footage of the home constructed may vary.



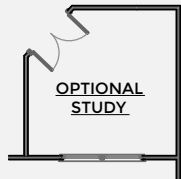
FIRST FLOOR PLAN



BONUS ROOM PLAN



OPTIONAL DELUXE BATH



OPTIONAL STUDY

Newport Lux

111818