



PIEDMONT TRIAD'S PREMIER HOME BUILDER

3 BEDROOMS | 3 BATHROOMS | 2,612 SQFT | 2 STORIES | 2 CAR GARAGE

Cambridge

B6L



B6H



B6T



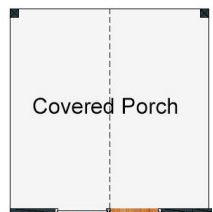
www.gokeystone.com



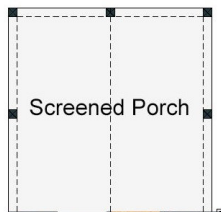
Building Communities to Enhance Lives!



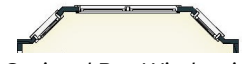
Optional Sunroom



Optional Covered Porch



Optional Screened Porch



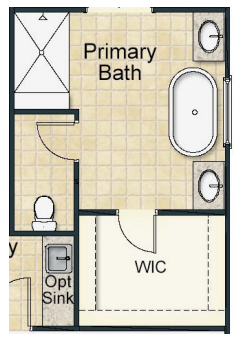
Optional Bay Window in Primary Bedroom



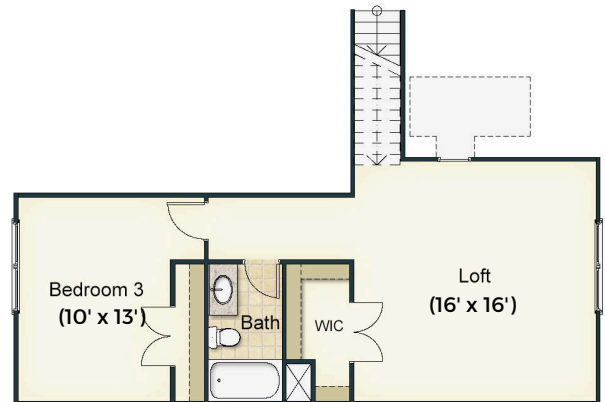
FIRST FLOOR



Optional Deluxe Primary Bathroom



Optional Spa Primary Bathroom



SECOND FLOOR

*Homeplan layout reflecting Elevation B6L



Cambridge



Keystone Homes is an Equal Housing Opportunity Builder. Home and community information, including pricing, included features, terms, availability, and amenities, are subject to change and prior sale at any time without notice or obligation. Pictures, photographs, colors, features, and sizes are for illustration purposes only and will vary from the homes as built. Square footage dimensions are approximate. Buyer should conduct his or her own investigation of the present and future availability of school districts and school assignments. Keystone Homes has no control or responsibility for any changes to school districts or school assignments should they occur in the future. Updated 6.5.24.