



PIEDMONT TRIAD'S PREMIER HOME BUILDER

3 BEDROOMS | 3 BATHROOMS | 2,612 SQFT | 2 STORIES | 2-3 CAR GARAGE

Cambridge

B6L



B6H



B6T



B6H



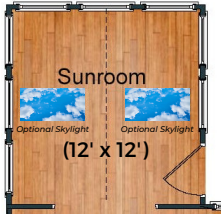
B6T



www.gokeystone.com



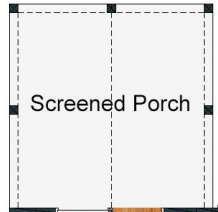
Building Communities to Enhance Lives!



Optional Sunroom



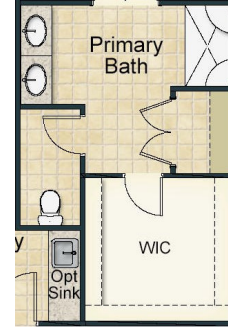
Optional Covered Porch



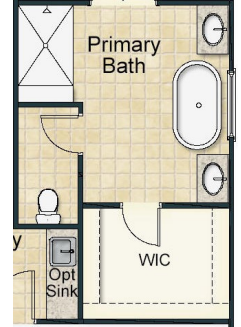
Optional Screened Porch



Optional Bay Window in Primary Bedroom



Optional Deluxe Primary Bathroom



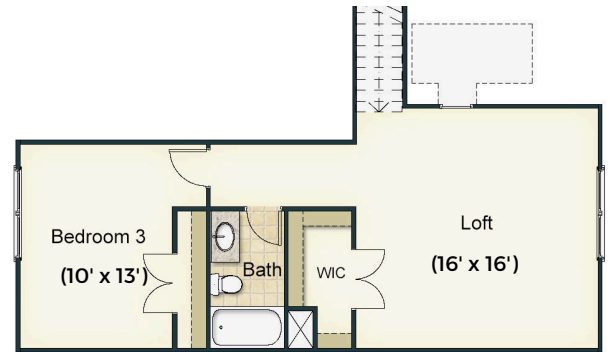
Optional Spa Primary Bathroom



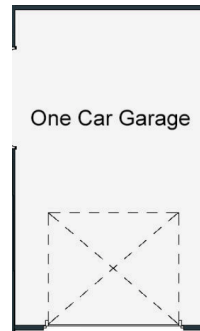
Optional Chef's Kitchen



FIRST FLOOR



SECOND FLOOR



Optional 3rd Car Garage

*Homeplan layout reflecting Elevation B6L



Cambridge



Keystone Homes is an Equal Housing Opportunity Builder. Home and community information, including pricing, included features, terms, availability, and amenities, are subject to change and prior sale at any time without notice or obligation. Pictures, photographs, colors, features, and sizes are for illustration purposes only and will vary from the homes as built. Square footage dimensions are approximate. Buyer should conduct his or her own investigation of the present and future availability of school districts and school assignments. Keystone Homes has no control or responsibility for any changes to school districts or school assignments should they occur in the future. Updated 7/2/24.