



PIEDMONT TRIAD'S PREMIER HOME BUILDER

3 BEDROOMS | 3 BATHROOMS | 2,338 SQFT | 2 STORIES | 3 CAR GARAGE

Newport Lux

C3T



B3X



C3P



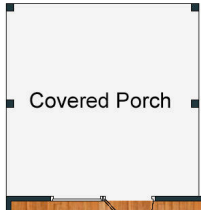
www.gokeystone.com



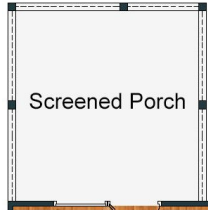
Building Communities to Enhance Lives!



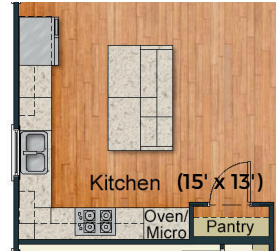
Optional Sunroom



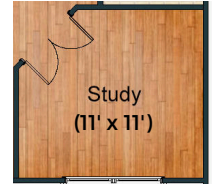
Optional Covered Porch



Optional Screened Porch



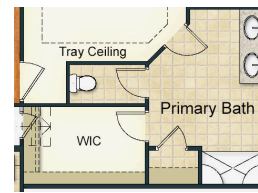
Optional Chef's Kitchen



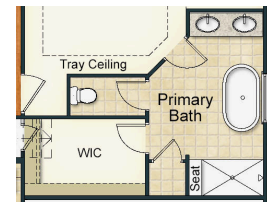
Optional Study I/O Dining Room



FIRST FLOOR



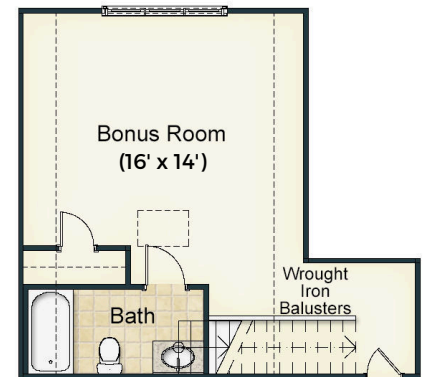
Optional Deluxe Primary Bathroom



Optional Spa Primary Bathroom



Optional Bay Window in Primary Bedroom



SECOND FLOOR

*Homeplan layout reflecting Elevation C3T



Newport Lux



Keystone Homes is an Equal Housing Opportunity Builder. Home and community information, including pricing, included features, terms, availability, and amenities, are subject to change and prior sale at any time without notice or obligation. Pictures, photographs, colors, features, and sizes are for illustration purposes only and will vary from the homes as built. Square footage dimensions are approximate. Buyer should conduct his or her own investigation of the present and future availability of school districts and school assignments. Keystone Homes has no control or responsibility for any changes to school districts or school assignments should they occur in the future. Updated 6/19/24.