



PIEDMONT TRIAD'S PREMIER HOME BUILDER

3 BEDROOMS | 3 BATHROOMS | 2,602 SQFT | 1 STORIES | 3 CAR GARAGE

Shelby

B3L



C3U



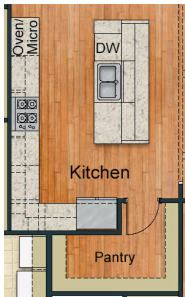
C3L



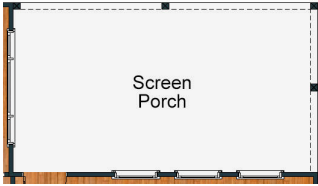
www.gokeystone.com



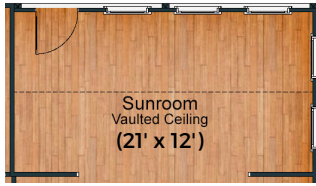
Building Communities to Enhance Lives!



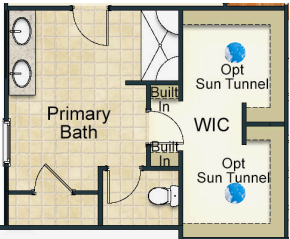
Optional Chef's Kitchen



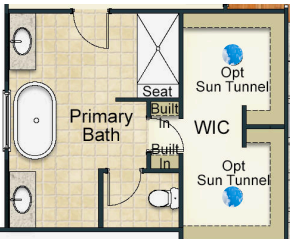
Optional Screened Porch



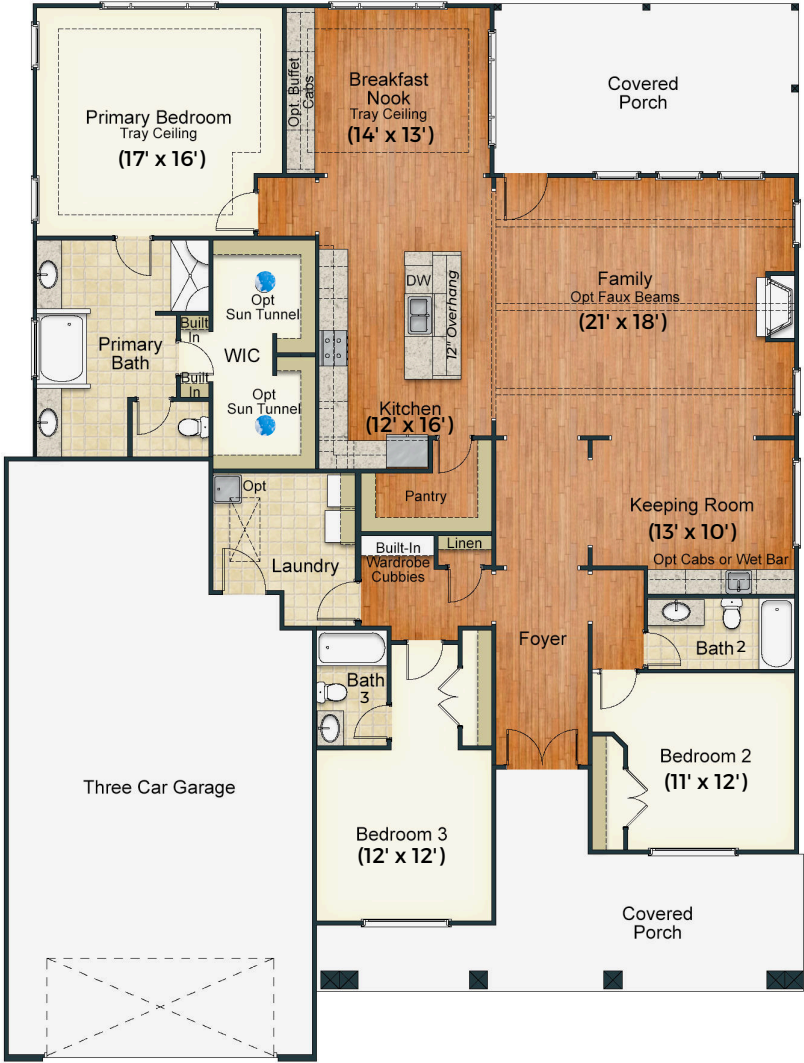
Optional Sunroom



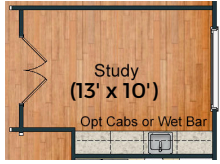
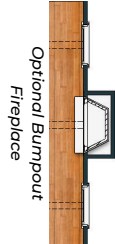
Optional Deluxe Primary Bath



Optional Spa Primary Bathroom



ONE LEVEL LIVING



Optional Study ILO Keeping Room

*Homeplan layout reflecting Elevation C3U



Shelby



Keystone Homes is an Equal Housing Opportunity Builder. Home and community information, including pricing, included features, terms, availability, and amenities, are subject to change and prior sale at any time without notice or obligation. Pictures, photographs, colors, features, and sizes are for illustration purposes only and will vary from the homes as built. Square footage dimensions are approximate. Buyer should conduct his or her own investigation of the present and future availability of school districts and school assignments. Keystone Homes has no control or responsibility for any changes to school districts or school assignments should they occur in the future. Updated 6/20/24.